

# The Circular January



2003

## ***In This Issue...***

***Spring Brake 2003***

***Updated Board of Directors***

***Full Year Calendar Update***

***New 911 GT3 Announcement***



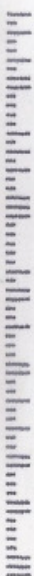
Central Indiana Region  
Porsche Club Of America  
Circulation Department  
5327 W. Minnesota Street  
Indianapolis, In 46241

Address Service Requested

Michael M. Robbins  
7533 Westfield Blvd.  
Indianapolis. IN 46240-2834



46240+2834 13





## CIR BOARD OF DIRECTORS

### President:

Peter J. Simpson (317) 580-1034 president@cirpca.org

### Vice President:

Mike Dworek (317) 839-8321 vice-president@cirpca.org

### Secretary:

Damon Beals (317) 831-5624 secretary@cirpca.org

### Treasurer:

Jason Collins (317) 277-9569 treasurer@cirpca.org

### Membership:

Chris Langsenkamp (765) 528-2792 membership@cirpca.org

### 2002 Officers

Matt Nemcek (317) 955-3802 board@cirpca.org

Steve Wendell (317) 887-2590 board@cirpca.org

Richard Robbins (317) 844-4222 board@cirpca.org

### Activities:

Position is Open Contact Any Board Member for Information

The board may be addressed collectively by email to board@cirpca.org

## APPOINTED VOLUNTEERS

### CIRcular Editor and Advertising:

Chris Langsenkamp (765) 528-2792 editor@cirpca.org

### Historian:

Michael Robbins (317) 253-9041 historian@cirpca.org

### Co-Race Directors:

Henry Riley (812) 579-5673 racing@cirpca.org

James Scarbrough (812) 379-4813 driversed@cirpca.org

### CIR Webmaster:

Chris Langsenkamp (765) 528-2792 webmaster@cirpca.org

## NEXT BOARD MEETING:

Wednesday, January 15<sup>th</sup>, 2003 @ 7:00 pm

Uno Pizza, Southport

## CLUB WEBSITE:

<http://cir.pca.org>

CIRcular is the official publication of the Central Indiana Region, Porsche Club of America. Statements and opinions herein are those of the author and do not necessarily represent the official position of CIR, its officers and members. The editor reserves the right to edit all material and to publish only material that is felt to be in the best interest of CIR and PCA. Permission is granted for other PCA regions to reprint articles provided credit is given to the author and CIRcular copyright is not involved.

## CONTENTS

3	Top Down	Chris Langsenkamp, Editor
4	The Way It Was	Mike Robbins, Historian
5	Advanced Timing	Event Calendar
6	Spring Brake 2003	James Scarbrough
12	PCNA News	Porsche National News
13	In The Zone	Regional News

## CIRCULAR ADVERTISING

<u>Sizes</u>	<u>Dimensions</u>	<u>Rates</u>
Business Card	2" H x 4.5" W	\$29.00 per Issue
Half Page	4" H x 4.5" W	\$49.00 per Issue
Full Page	8" H x 4.5" W	\$79.00 per Issue

The CIRcular is usually published and sent to press the first week of every month. All submissions, including ads, articles, etc., must be received no later than the end of the month preceding each issue. All advertising must be pre-paid for a minimum of 3 months. Artwork & copy may be submitted in Photo (JPG), Microsoft Word 2000 (DOC), Microsoft Publisher 2000 (PUB), or Microsoft PhotoDraw 2000 (MIX) file formats. All ads will be printed in black-and-white or grayscale; no color advertising is available. Please contact the editor with any questions about formats.

Full Page ads will generally appear in the same place each month. Smaller ads may appear in different locations each month as space and layout requirements dictate. Editorial Staff reserves the right to make slight modifications in Porsche Mart ads to accommodate space constraints and conform to uniform layout standard.

**Contact Chris Langsenkamp at (765) 528-2792 or email to [editor@cirpca.org](mailto:editor@cirpca.org) for more information.**



## Top Down

Chris Langsenkamp, Editor

Welcome to a new year and an exciting season with cars and friends. The board is working diligently to put together a broad scope of activities, and we all hope to see all of you turn out and join in the fun!

The website redevelopment is well under way and should be online this month. We hope you'll all come by for a visit and keep coming back to participate in the interactive features we've got in store.

Be sure to check out the information on our 2nd Annual Spring Brake Drivers Ed on page 6—any adult member can participate, regardless of track experience, or lack thereof!! What a great way to learn how to drive better and safer! If you've never been to a school like this, then you only THINK you know how to drive. Non-Porsche's Welcome!

## \$1000 PORSCHE REBATE!

Yes! You read that right. Porsche is offering PCA members an exclusive deal. The \$1000 rebate applies to the Boxster S and the Boxster gets \$500 rebate. You will be mailed a form to send in after you take delivery. Combined with the current lease deals there has never been a better time to own a new Porsche Boxster

2002 Boxster S:  
18" Turbo Look Whls.  
Sport Touring Pkg.  
Power Seat  
Painted Roll Bar  
Painted Rear Console Porsche Stab. Mgmt.



MSRP \$62,000 Typical Lease Pmt.  
Disc. \$ 4,000 \$599 w/ \$5300



## The Way It Was

Mike Robbins, Historian

### TEN YEARS AGO

The January 1993 CIRCULAR was rather brief but it included info on the Parade in Cincinnati, tickets for the Indy 500 Mile Race and Tech Session at Gt. Lakes.



### TWENTY YEARS AGO

The January 1983 CIRCULAR included a report on the 1982 year end dinner. After dinner and presentation of awards Al Maxwell had a slide show of the years events....set to music. Then Bob Weaver and Perry Meek told of their adventures on the 4-Ball Rally; an event that was really a race from Boston to San Diego. They placed third and supplemented their narration with a video.

### AND MORE...

You'll have to excuse us for a short column this month. Maybe next month we'll have more to say. Just a few more months until Porsche driving time.

Will these pages be cited ten or twenty years from now?

Stick around . . .



(317) 271-9155

*Autocar Sports & Classics provides quality service,  
using quality parts, done in a timely fashion  
at fair and reasonable prices.*

1733 Expo Lane • Indianapolis, Indiana





## Advanced Timing

Event Calendar 2003

### February

1st-2nd  
15<sup>th</sup> Rolex 24 Hours at Daytona  
Chili Cook-Off @ Pete Simpson's House

### March

TBA IMAX Theater Social  
TBA O'Daniel Tech Session  
23<sup>rd</sup> IRL Racing @ Phoenix International Speedway

### April

25<sup>th</sup>-27<sup>th</sup> Spring Brake Drivers Ed @ Putnam Park Road Course

### May

1<sup>st</sup>-3<sup>rd</sup> The Visit 3.0 @ National Corvette Museum  
22<sup>nd</sup> Carburetion Day @ Indianapolis Motor Speedway  
25<sup>th</sup> Indy 500 Race @ Indianapolis Motor Speedway

### June

TBA Axis Vs. Allies (MG vs. Porsche) Go-Cart Challenge  
TBA Metamora Road Trip  
TBA Vintage Cars Festival  
20<sup>th</sup>-22<sup>nd</sup> PCA Ohio Valley Region @ Putnam Park Road Course  
22<sup>nd</sup>-28<sup>th</sup> 2003 Porsche Parade @ Tampa Florida

### July

TBA Tweeks Swap Meet  
26<sup>th</sup>-27<sup>th</sup> PCA Mid-Ohio Region @ Putnam Park Road Course

### August

TBA New Harmony Road Trip  
3<sup>rd</sup> Brickyard 400 Race @ Indianapolis Motor Speedway  
29<sup>th</sup>-31<sup>st</sup> PCA Ohio Valley Region @ Putnam Park Road Course

### September

19<sup>th</sup>-21<sup>st</sup> CIR Club Racing @ Putnam Park Road Course  
26<sup>th</sup>-28<sup>th</sup> SAP Us Grand Prix Race @ Indianapolis Motor Speedway  
27<sup>th</sup> CIR USGP Tour and Dinner—Tentative

### October

18<sup>th</sup> 20th Annual Winery Tour

### November

18<sup>th</sup> CIR Annual Dinner—Tentative

### December

14<sup>th</sup> CIR Christmas Brunch—Tentative

## Spring Brake 2003 Driver Education Putnam Park April 26 & 27, 2003



Central Indiana Region is hosting its 2<sup>nd</sup> annual driver education event at Putnam Park Road Course in Mt. Meridian, Indiana. Putnam Park was built in 1991 and Central Indiana Region PCA was one of the first groups to utilize the excellent circuit for high performance driver's education and club racing. Putnam Park is 40 miles west of Indianapolis, just off I-70 near Cloverdale. Weather can be turn rapidly this time of year so please come prepared. This event hopes to prove to be great for driving and for sharing good times with old and new friends.

The track is a 1.8-mile long, ten turn road course with an excellent layout. The entire course can be seen from the pit area. Because the track is relatively flat, has high visibility with plenty of run off room, it makes a terrific place to begin your high performance driving experience. It's great for experienced drivers as well and offers positive and negative camber corners, several high speed corners and a down hill main straight.

All drivers will have an instructor riding with them on-track until the driver is comfortable with the course and the car. There will be four run groups and an instructor group to better match students of similar abilities in the same session: **Group A**—very experienced drivers in higher performance cars; **Group B**—experienced drivers new to Putnam Park or driving medium performance cars; **Group C**—student drivers with some experience; **Group D**—student drivers with little or no experience. There will also be scheduled classroom instruction/discussion sessions to discuss aspects of high performance driving. There will be plenty of time for questions and answers. This is an excellent time to learn more about your car and enhance your driving skills, and become comfortable driving your car near the limit, which will improve your overall driving ability both on and off the track.

### Event headquarters:

**Holiday Inn Express**  
**1017 Main Street**  
**Cloverdale, Indiana**  
**Phone: (765) 795-5050.**

Rooms are being held under the Porsche Club at a special rate of \$62.00 a night. This motel rate includes a paid security person for the parking lot.



## Spring Brake 2003, continued...

### Registration Information:

Entry Fee: \$250 per CIR member, \$255 per non-CIR member - fee includes weekend membership fee. Fill out the Registration Form on page 14 and mail with payment, payable to CIRPCA, to:

**James Scarbrough**  
**2525 Union Street**  
**Columbus, IN 47201**  
**Phone: (812) 379-4813**  
**e-mail: driversed@cirpca.org**

There is a \$20 cancellation fee for cancellation before March 14th. No refunds will be made for failing to follow the requirements listed below or for cancellation after March 14th, unless the spot can be filled. You will receive an information package containing a technical inspection form, medical form, track layout, and directions as confirmation of your registration.

### General Requirements:

Helmets - 1995 or later Snell rating SA90. No M (motorcycle) rated helmets or non-Snell rated helmets will be allowed. Failure to have an approved helmet will lead to ejection from the event without refund.

Seatbelts - driver and passenger minimum 3-point (harness preferred).

Roll bar required in all convertibles; sunroofs must be fully closed, targa tops must be installed.

Minimum 3/32" tire depth or visible tread all the way across the tire.

Clothing - Long sleeve cotton shirt, long pants (or driving suit), and leather or canvas shoes.

Valid driver's license (must show at registration), 18 years or older.

No open exhausts.

Passenger seat and seatbelt must be comparable to driver's side.

Drivers are responsible for the preparation and safety of their cars.

You will receive a technical inspection checklist, which must be completed and signed prior to the event. It is recommended that a competent mechanic perform the inspection. All vehicles will be inspected and must pass a basic safety check at the event prior to running.

Shake off those winter blues and pull your Porsche out of hibernation! Drive it near the limit to prepare you for the up coming season! Come to Central Indiana Region PCA for a great SPRING BRAKE weekend of high performance driving and camaraderie!

## Spring Brake 2003 Registration Form

### Make Extra Copies for Co-Drivers

#### DRIVER INFORMATION

Name

Address

City / State / Zip

Phone Number

Email Address

PCA Region (if PCA Member, non-members leave blank)

DMV Driver's Lic.#

State

Expires

#### DRIVER EXPERIENCE

Year

Track

Run Group

I believe I should be placed in Group (circle one): **A B C D**

#### CAR DATA

Year

Make

Model

Color

Performance / Safety Modifications

Co-Driver Name (if sharing a car, otherwise leave blank)

#### REGISTRATION

Registration fee of \$250 enclosed for CIRPCA member

Registration fee of \$255 enclosed for non CIRPCA member includes weekend membership fee.

Signature

Date



**Send Spring Brake 2003  
Registration Form To:**

**James Scarbrough  
2525 Union Street  
Columbus, IN 47201**

**Include Registration Fee**

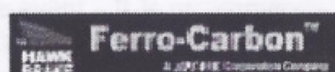


1-800-397-7815  
www.racerpartswholesale.com

**317-639-0725 or 800-397-7815**

**www.racerpartswholesale.com**

**Your source in Indianapolis and on the web.**



**Bring this ad to our showroom at  
411 Dorman, Indianapolis and receive  
a free T-shirt with any purchase over \$25.00**

TEAR OUT THIS PAGE

TEAR OUT THIS PAGE

When your network crashes at 3:00 A.M.,

## WHO DO YOU CALL?

"When it's time to build, expand, or restructure your network, it's worth a call to a company you can trust, a company who has your best success as their top priority."

Systems Design and Integration

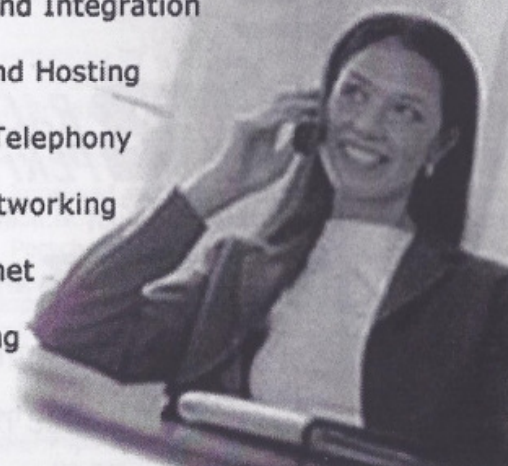
Website Design and Hosting

Computer Based Telephony

Virtual Private Networking

High-Speed Internet

Security Consulting



# CLEVER TECHNOLOGIES

5327 West Minnesota Street, Indianapolis, Indiana, 46241  
www.cleverttech.net - sales@cleverttech.net  
(317) 487-5951 - (866) SO-CLEVER


**Chris Langsenkamp, President**



When your network crashes at 4:00 A.M.  
WHO DO YOU CALL?

**HIGHLINE MOTORS, INC.**  
INDY'S PREMIER EXOTIC CAR STORE

**BILL MAYES**



3400 E. 96th St. OFFICE 317.815.0800  
Indianapolis, IN 46240 Fax 317.815.8377  
WWW.HIGHLINEMOTORS.COM

**NOW OPEN**

**C&R RACING PERFORMANCE**

6950 Guion Rd., Indianapolis, IN

**317-293-4100**

*Specializing in high-tech racing and aftermarket performance parts.*

Aurora Bearings  
AEM  
Brembo  
Brown & Miller  
C & R Racing Radiators  
C & R Import Racing

CV Products  
Heatshield Products  
Jiffy-lite  
K&N  
EMP / Stewart  
MOMO

Peterson Fluid Systems  
Port City Racing  
Setrab  
Skunk 2  
Spal Racing  
Tilton

*And many, many more...*

**SEE ALL OUR CURRENT PRODUCTS AT...[www.crracing.com](http://www.crracing.com)**

**DEALER INQUIRIES WELCOME**

## PCNA News

Porsche National News

ATLANTA, DECEMBER 19, 2002 --- Porsche has revealed plans to introduce an ultra high performance version of its 911 Carrera Coupe sports car to the world market in the spring of 2003. The new model, named the 911 GT3, represents the most powerful non-turbocharged Porsche ever offered for street use in the United States and Canada.

Based on the previous 911 GT3 that was not available in North America, the 2003 Porsche 911 GT3 features a 3.6-liter, flat- six cylinder engine producing 380 horsepower (SAE) and 285 pound-feet of torque. With a power output of an impressive 105 horsepower per liter, the engine propels the 911 GT3 from 0 to 60 mph in 4.3 seconds, from 0 to 100 mph in 9.4 seconds, and to a top track speed of 190 mph. To handle this increased performance, the 911 GT3's transmission is fitted with transmission oil cooling and injection oil lubrication and has undergone some additional reinforcements.

The most striking visual feature of the new 911 GT3 is its unique rear wing that is largely responsible for excellent directional stability at high speeds and increased downforce for fast cornering. Combining a redesigned front apron, the GT3 achieves an outstanding drag coefficient ( $C_d=0.30$ ) for a car in its class.

The GT3's handling is further enhanced by a sports suspension, wider and lighter wheels, and wider tires. Front wheels are 8.5 inches wide fitted with 235/40 ZR 18 tires, and rear wheels are 11 inches wide with 295/30 ZR 18 tires.

Brakes on the GT3 have been improved as well. Front brakes now feature six-piston, rather than the previous four-piston monobloc brake calipers and larger discs fitted with Porsche-patented cooling ducts. The ABS brake system was also modified. The new system (ABS 5.7) has a faster and more sensitive control response. It is also lightweight and provides greater stability for ABS braking. Porsche Ceramic Composite Brake (PCCB) discs, standard on the 911 GT2, can be fitted on request.

Priced at \$99,900 in the United States, the 2003 Porsche 911 GT3 will be in North American Porsche dealerships in May 2003.

Porsche Cars North America, Inc. (PCNA), based in Atlanta, Ga., and its subsidiary, Porsche Cars Canada, Ltd., are the exclusive importers of Porsche vehicles for the United States and Canada. A wholly owned, indirect subsidiary of Dr. Ing. h.c.F. Porsche AG, PCNA employs approximately 200 people who provide Porsche vehicles, parts, marketing and training for its 203 U.S. and Canadian dealers. They, in turn, provide Porsche owners with best-in-class service.



## In The Zone

Regional News

### F1 TICKETS FOR SALE

We have over 100 tickets for sale to the 2003 F1 race on September 28th. Please contact Pete Simpson (317) 580-1034 as soon as possible to reserve your seats. Available seats must be paid for in advance to reserve them, first-come first-pay basis. If you decide next year you can't attend, the club website will have a place for you to advertise them to other members.



General Maintenance & Repair  
since 1971

944 914 912  
Audi VW (water cooled)

Custom Engines & Suspension for  
911 & 930  
Track Prep from Bumper to Bumper

Tel 317/894-8185 Bob Farmer  
800/213-6373 2464 Buck Creek Rd  
Fax 317/891-2607 Greenfield, IN 46140



## What you want

*...professional service  
for your Porsche.*

Providing the high  
standards of technical  
service you expect while  
still giving the personal  
attention you crave.

**We are your  
Performance  
Professionals.**

- New state-of-the-art repair facility conveniently located just west of I-69 between 82nd and 96th Streets (near the Castleton Post Office)
- Personal attention from an owner who cares about your satisfaction
- Loaner cars available by request
- 5 full-time, factory trained, ASE Certified Technicians (106 years combined experience)
- Equipped and trained to service Porsche autos.

**Our new location:**  
7314 East 90th Street

**Hours:**

Mon. - Fri. 7:30am to 5:30pm

**317.595.9272**



**EURO  
MOTORWORKS**