

The Circular Sep-Oct 2002



Central Indiana Region
Porsche Club Of America
Circulation Department
5327 W. Minnesota Street
Indianapolis, In 46241

Address Service Requested

Michael M. Robbins
7533 Westfield Blvd.
Indianapolis, IN 46240-2834



CIR BOARD OF DIRECTORS

President:

Matt Nemcek (317) 955-8802 president@cirpca.org

Vice President:

Steve Wendell (317) 887-2590 vice-president@cirpca.org

Secretary:

Richard Robbins (317) 844-4222 secretary@cirpca.org

Treasurer:

Peter J. Simpson (317) 580-1034 treasurer@cirpca.org

Membership:

Damon Beals (317) 831-5624 membership@cirpca.org

Past Secretary:

Chuck Langsenkamp (317) 251-3694 past-secretary@cirpca.org

Activities:

Position is Open Contact Any Board Member for Information

The board may be addressed collectively by email to board@cirpca.org

APPOINTED VOLUNTEERS

CIRcular Editor and Advertising:

Chris Langsenkamp (765) 528-2792 editor@cirpca.org

Historian:

Michael Robbins (317) 253-9041 historian@cirpca.org

Co-Race Directors:

Henry Riley (812) 579-5673 radng@cirpca.org

James Scarbrough (812) 379-4813 drivesed@cirpca.org

CIR Webmaster:

Damon Beals (317) 831-5624 webmaster@cirpca.org

NEXT BOARD MEETING:

Saturday, November 16th, 2002 @ 6:30 pm
The Rathskeller Restaurant, Downtown Indianapolis

CLUB WEBSITE:

<http://cir.pca.org>

CIRcular is the official publication of the Central Indiana Region, Porsche Club of America. Statements and opinions herein are those of the author and do not necessarily represent the official position of CIR, its officers and members. The editor reserves the right to edit all material and to publish only material that is felt to be in the best interest of CIR and PCA. Permission is granted for other PCA regions to reprint articles provided credit is given to the author and CIRcular copyright is not involved.

CONTENTS

3	Top Down	Matt Nemcek, President
5	The Way It Was	Mike Robbins, Historian
7	Advanced Timing	Event Calendar
8	CIRPCA Annual Dinner	Matt Nemcek, President
13	In The Zone	Regional News
14	Porsche Mart	Buy / Sell / Trade

CIRCULAR ADVERTISING

<u>Sizes</u>	<u>Dimensions</u>	<u>Rates</u>
Business Card	2" H x 4.5" W	\$29.00 per Issue
Half Page	4" H x 4.5" W	\$49.00 per Issue
Full Page	8" H x 4.5" W	\$79.00 per Issue

The CIRcular is published and sent to press the first week of every month. All submissions, including ads, articles, etc., must be received no later than the end of the month preceding each issue. All advertising must be pre-paid for a minimum of 3 months. Artwork & copy may be submitted in Photo (JPG), Microsoft Word 2000 (DOC), Microsoft Publisher 2000 (PUB), or Microsoft PhotoDraw 2000 (MIX) file formats. All ads will be printed in black-and-white or grayscale; no color advertising is available. Please contact the editor with any questions about formats.

Full Page ads will generally appear in the same place each month. Smaller ads may appear in different locations each month as space and layout requirements dictate. Editorial Staff reserves the right to make slight modifications in Porsche Mart ads to accommodate space constraints and conform to uniform layout standard.

Contact Chris Langsenkamp at (765) 528-2792 or email to editor@cirpca.org for more information.

Top Down

Matt Nemcek, President

Mark your calendars for the CIR Annual Dinner and Election of Officers, which will take place on November 16th. Please return the reservation form found in this issue of the CIRcular. We have also developed the slate of officer candidates for the coming year. The candidates are:

President:	Pete Simpson
Vice-President:	Mike Dworek
Secretary:	Damon Beals
Treasurer:	Jason Collins
Membership:	Chris Langsenkamp
Activities:	Open

We are very much in need of an Activities Chairman for this open position. Anyone interested should please contact any current board member.

I would like to thank everyone who has participated in the US Grand Prix Formula 1 related events that have taken place this year. As anyone who attended the August 18th track lapping event at the Speedway can attest, the PCA put together a very impressive display of cars! With the exception of perhaps the Corvette Club, the PCA had by far the largest turnout at the track.

I would like to give special thanks to Bob Snider for all his work on the Formula 1 ticket distribution, the August 18th track lapping event and the PCA parking corral. I would also like to thank PCNA and Jack Bair for bringing such a nationally visible event as the Supercup Dinner to the CIR. Finally, I would like to thank the Indianapolis Motor Speedway, the City of Indianapolis and SAP US Grand Prix Hospitality Committee for providing the Grand Cruise and the PCA Parking Corral as ways for the PCA to become more involved in the excitement of Formula 1 weekend.

The Way It Was

Mike Robbins, Historian

TEN YEARS AGO

The biggie in the October 1992 CIRcular was Bob Snider's report on the Porsche Parade-in San Diego that year. He also told of his round-a-bout route home via a lot of scenic areas in the southwest. Going to Porsche Parades gives you opportunities to see a lot of this big country of ours. I don't know if my Speedster would have been driven in the 48 contiguous states if it hadn't been for driving to Parades.



TWENTY YEARS AGO

A couple of big reports in the October 1982 CIRcular covered the Hoosier Auto Show and Swap Meet and the Monterey Vintage Races in California. Porsche was the featured marque in Monterey that year and the factory sent a squadron of ex race cars.

TWENTY FIVE YEARS AGO

The event for October 1977 was a triple header. It began with a tech session by Jim O'Neil at The Paddock in Knightstown. Jim was doing some Porsche restoration and fabricating sheet metal parts to replace rusted sections of our cars. From there we toured some neat back roads to Hagerstown. Part three was for the gastronomes in the group as we stuffed ourselves at Welliver's Smorgasbord. A great day!

THIRTY YEARS AGO

The Sandifers put on a fun rally that was the event for October 1972. The rally combined a treasure hunt, course following instructions and finding answers to a list of questions as you traversed the route. From the report in the CIRcular it was a well attended, well planned and highly enjoyed by all.

AND MORE...

Our own recent Porsche activities have included a 356 get-to-gether on the south side of Chicago and a VW-Porsche Swap Meet in Cincinnati. Unfortunately, we'll miss the umpteenth version of Chuck's Winery Tour as I'll be on a 356 tour of the mountains of north Georgia, southern Tennessee and western No. Carolina. I'm sure that Porsche owners in all states, except maybe Rhode Island, can make a list of roads in their state that are incomparable for fun driving. Having been over many of the roads on this forthcoming southern tour, I can say that some of these are among the best in the country. Some of the views in the Smoky Mountains are awesome. But you can't enjoy the driving and the viewing simultaneously or you might find your car against a guard rail...or worse, over the side. I guess you have to take these routes twice...once for driving pleasure and again for viewing pleasure.

The expression, "it isn't the cars, it's the people" is frequently heard re Porsche owners. I recently had the opportunity to combine some of my other interests with some Porsche friends. I went to Reno for the Air Races to satisfy my enjoyment of that activity. While there I spent some time with former CIR member Mark Smedley who now lives in Sacramento and Walt Minato, formerly of the Chicago Region PCA now living at Lake Tahoe. Other Porsche friends, Cindy and Paul Christensen, live about ten miles out of Reno and invited me to spend my Reno stay with them. Since their house is a couple of mountain ridges away from the city, we were able to do a little naked eye astronomy without the problem of glare from the city lights. The night sky was unbelievable. There were so many stars that it was difficult to pick out some constellations. A far cry from sky viewing near city lights. One night they invited some other Porsche people who I knew, including Brad and Carole Ripley, who operate the Porsche parts business, NLA Ltd. So traveling about the country and always having Porsche friends nearby is an ancillary benefit to Porsche ownership.

Will these pages be cited ten or twenty years from now? What part of the country will I have returned from? Stick around.

\$1000 PORSCHE REBATE!

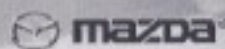
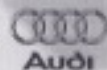
Yes! You read that right. Porsche is offering PCA members an exclusive deal. The \$1000 rebate applies to the Boxster S and the Boxster gets \$500 rebate. You will be mailed a form to send in after you take delivery. Combined with the current lease deals there has never been a better time to own a new Porsche Boxster.

2002 Boxster S:
18" Turbo Look Whls. Sport Touring Pkg.
Power Seats Painted Roll Bar
Painted Rear Console
Porsche Stabs. Mgmt.



PORSCHE
O'DANIEL
Automotive Group

MSRP \$62,000 Typical Lease Pmt.
Disc. \$ 4,000 \$599 w/ \$5300 Rebate
\$1,000 cash dwn + 1¢ pmt.
Final \$ \$58,620 (Based on June lease info)



Ft. Wayne, Indiana
I-69 Exit 105A
(260) 435-5350
WWW.ODANIELAUTO.COM

Advanced Timing

Event Calendar 2002

November

16th Annual Dinner & Board Meeting at The Rathskeller
Get your invitation in by November 10th!

2003

April

25th-27th Driver's Ed At Putnam Park Road Course

September

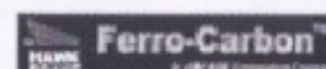
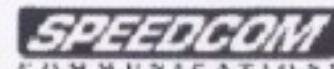
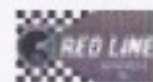
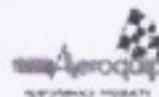
19th-21st Porsche Thunder At Putnam Park Road Course



317-639-0725 or 800-397-7815

www.racerpartswholesale.com

Your source in Indianapolis and on the web.



Bring this ad to our showroom at
411 Dorman, Indianapolis and receive
a free T-shirt with any purchase over \$25.00

CIRPCA Annual Dinner

The Board of Directors of the Central Indiana Region PCA cordially invites you to join them for the Annual Dinner and Election of Officers at The Rathskeller Restaurant on the evening of Saturday, November 16th, from 6:30pm to 9:30pm. The Rathskeller Restaurant is located at 401 E. Michigan Avenue in downtown Indianapolis in the historic 19th century Athenaeum Building. The Rathskeller has been voted the best German restaurant for 5 years in row and CIR dinners there are always outstanding, so please consider joining us for this special event.

The cost for the dinner is \$25.00 per person.

Please RSVP by Sunday, November 10th, by using the form below. Questions can be directed to:

Matt Nemcek
 president@cirpca.org
 (317) 955-8802.

Member Name: _____

Total Number in Party: _____

Please return this form and a check for \$25.00 per person, made out to CIR/PCA, to:

Matt Nemcek
 956 English Ave.
 Indianapolis, IN 46203

t-shirts



C. (06204)

Gildan Ultra Cotton
 2000/2000B. COTTON

Adult: S, M, L, XL \$10.00
 Adult: XXL \$12.00
 Adult: XXXL \$14.00

99 White (3,Y)	51 Heliconia	28 Indigo Blue (Y)
02 Sports Grey (3,Y)	19 Sapphire (Y)	35 Purple (Y)
17 Metro Blue	32 Oceana	42 Maroon (3,Y)
04 Ash (3,Y)	03 Steel	86 Tan
70 Yellow Haze	81 Chestnut	62 Olive (Y)
71 Daisy (Y)	82 Natural (3,Y)	06 Charcoal
48 Orange (3)	57 Pine	18 Blue Dusk (Y)
20 Royal (3,Y)	39 Eggplant	45 Red (3,Y)
65 Gold	53 Azalea	15 Navy (3,Y)
72 Lime	80 Sand (Y)	61 Prairie Dust (Y)
00 Black (3,Y)	64 Serene Green	49 Cedar
29 Tangerine	31 Stone Blue	27 Leaf (Y)
24 Iris	36 Violet	58 Forest Green (3,Y)
63 Jade (Y)	30 Light Blue (Y)	
51 Heliconia	28 Indigo Blue (Y)	

fleece



D. [03160]

880215 2 Nuland™
 543M/542B SHIRTS
 8-12, 30/30 weight
 100% polyester/40% cotton
 sweatshirt, fleece collar, cuffs and

Adult: S, M, L, XL \$15.00
 Adult: XXL \$18.00
 Adult: XXXL \$20.00
 Adult: XXXXL \$22.00

99 White (3,Y)	46 Tree Frog (Y)
82 Natural (3,Y)	37 Arctic Yellow
68 Blue (3,Y)	19 Top Royal (3,Y)
03 Ocean	30 Tree Frog (Y)
02 Forest	42 Maroon (3)
02 Olive (Y)	58 Forest Green (3,Y)
65 Gold	38 Tree Frog (3,Y)
63 Jade (Y)	60 Olive (3,Y)
48 Orange (3)	60 Olive (3,Y)



Everyday Design



A. [08761]
 100% COTTON, LONG SLEEVED, BUTTON DOWN SHIRT.
 100% COTTON, LONG SLEEVED, BUTTON DOWN SHIRT.
 100% COTTON, LONG SLEEVED, BUTTON DOWN SHIRT.
 100% COTTON, LONG SLEEVED, BUTTON DOWN SHIRT.

Adult: S, M, L, XL \$27.00

Adult: S, M, L, XL \$27.00
 Adult: XXL \$29.00
 Adult: XXXL \$31.00

E. [93446]

100% COTTON, LONG SLEEVED, BUTTON DOWN SHIRT.
 100% COTTON, LONG SLEEVED, BUTTON DOWN SHIRT.
 100% COTTON, LONG SLEEVED, BUTTON DOWN SHIRT.
 100% COTTON, LONG SLEEVED, BUTTON DOWN SHIRT.

Adult: S, M, L, XL \$28.00
 Adult: XXL \$30.00

outerwear



Adult: S, M, L, XL, \$56.00
 Adult: XXL \$61.50
 Adult: XXXL \$63.50

LUNA BASICS

C. [09555]
 GORE-TEX® BREATHABLE, WATER-RESISTANT JACKET.
 100% POLYESTER, FULL LENGTH SLEEVE, WITH KNEE PADS.
 100% POLYESTER, FULL LENGTH SLEEVE, WITH KNEE PADS.
 100% POLYESTER, FULL LENGTH SLEEVE, WITH KNEE PADS.
 100% POLYESTER, FULL LENGTH SLEEVE, WITH KNEE PADS.

Adult: S, M, L, XL, \$56.00
 Adult: XXL \$61.50
 Adult: XXXL \$63.50

sport shirts

E. [90490]

100% COTTON, LONG SLEEVED, BUTTON DOWN SHIRT.
 100% COTTON, LONG SLEEVED, BUTTON DOWN SHIRT.
 100% COTTON, LONG SLEEVED, BUTTON DOWN SHIRT.
 100% COTTON, LONG SLEEVED, BUTTON DOWN SHIRT.

Adult: S, M, L, XL, \$35.00
 Adult: XXL, \$38.00



A. [90685]
 100% COTTON, LONG SLEEVED, BUTTON DOWN SHIRT.
 100% COTTON, LONG SLEEVED, BUTTON DOWN SHIRT.
 100% COTTON, LONG SLEEVED, BUTTON DOWN SHIRT.
 100% COTTON, LONG SLEEVED, BUTTON DOWN SHIRT.

Adult: S, M, L, XL \$32.40



Adult: S, M, L, XL \$32.40



A. [90685]
 LUNA BASICS 88265/BB265Y, SIX-PANEL TWILL CAP.
 100% COTTON TAIL, PRESTITCHED SIX-PANEL CAP. 3 1/2" PRO style crown. Plastic snap size adjuster. Padded backrest.
 Matching undershirt.

Adult: \$10.00
 Youth: \$8.00

LUNA BASICS



Vickers International Inc.

Embroidery
Screen Printing

800 733-3337

765 868-4646

Fax 888-868-4650

765-868-4650

cirpca@VickersUSA.com

9 a.m. - 5 p.m. M-F cst

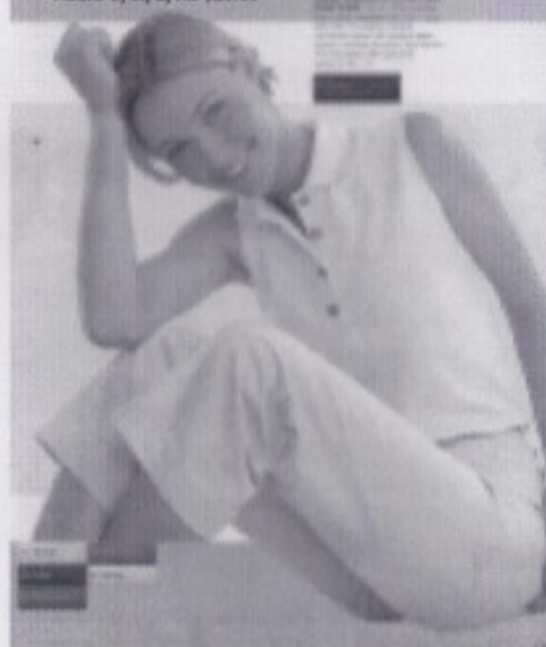
A. [09557]

Adult: S, M, L, XL, \$30.00
Adult: XXL \$32.00
Adult: XXXL \$34.00

A. [09558]

Adult: M, L, XL, \$49.00
Adult: XXL, \$55.00

Adult: S, M, L, XL \$25.00



A. [08307]

Adult: S, M, L, XL \$14.00
Adult: XXL \$16.00

When your network crashes at 3:00 A.M., WHO DO YOU CALL?

"When it's time to build, expand, or restructure your network, it's worth a call to a company you can trust, a company who has your best success as their top priority."

Systems Design and Integration

Website Design and Hosting

Computer Based Telephony

Virtual Private Networking

High-Speed Internet

Security Consulting



CLEVER TECHNOLOGIES

5327 West Minnesota Street, Indianapolis, Indiana, 46241

www.cleverttech.net - sales@cleverttech.net

(317) 487-5951 - (866) SO-CLEVER

Chris Langsenkamp, President

In The Zone

Regional News

THE NINETEENTH WINERY TOUR

Chuck Langsenkamp

Terrific weather. There were twenty cars from CIR meeting up with those from Kentucky Region (Louisville) and Southern Indiana Region (SIR) from Evansville making a total of 55 at the winery. After a traffic problem on I 65 it was smooth sailing from there. The Seasons in Nashville did their great buffet and on we went on Route 135 to the winery that gave us special parking again.


At this point I want to thank Chuck Henzie and my son Chris at registration and the wine give-away. Also Pete Lavengood for checking the route for me. Pete and I attended Purdue together in the fifties. He lives on 135 and was kind enough to fire up one of his vintage BMW motorcycles and running the whole thing. Pete is a CIR member with a near mint 356.

"You ain't seen nothin' yet" from the first talking picture in 1927 with Al Jolson.

At the winery I met some folks from Kentucky Region. The current plan is to expand their Autumn Derby into a three day event. This would involve us along with SIR and Ohio Valley Regions. The format would be similar to the former Derby events in the eighties. Cocktail party on Friday night, rallye and concours at the winery on Saturday with dinner somewhere and an autocross on Sunday. This could be fun. We would still put on our tour, but it's an interesting option.

2003 makes twenty years of my putting on this event. I am actively seeking someone to work with me next year and then take it on from there.

HIGHLINE MOTORS, INC.
INDY'S PREMIER EXOTIC CAR STORE
BILL MAYES



3400 E. 96th St. OFFICE 317.815.0800
Indianapolis, IN 46240 Fax 317.815.8377
www.highlinemotors.com

PORSCHE MART

CARS FOR SALE

1973 911 RS Touring. #0493. Excellent condition. Recent correct engine and transmission rebuild. Red/black. \$65,000.
JJTTTSS@aol.com.

2000 986 Boxster S WPOCB2988YU660593. Speed yellow, full Savannah Beige leather, Tiptronic trans, sport touring package (digital sound, Litronics, headlight washers, computer, cruise, windstop, etc.) Full wood package and wheel, 12 more options. Listed \$71,652. Len Ehmke Concours winner, 1,500 MI, rate equipped Boxster S, \$66,000 firm.
Dan Householder (513) 474-3631 or bhouseho@fuse.net
2135 Butlersbridge Ct., Cincinnati, OH. 45244-2653.

1984 911 Cabriolet Slate Blue/Blue Lthr, low miles, Texas car, excellent condition. \$21,950
Sam Lombard (765)463-0573 West Lafayette



General Maintenance & Repair
since 1971

944 914 912
Audi VW (water cooled)

Custom Engines & Suspension for
911 & 930
Track Prep from Bumper to Bumper

Tel 317/894-8185 Bob Farmer
800/213-6373 2464 Buck Creek Rd
Fax 317/891-2607 Greenfield, IN 46140

PORSCHE MART

1976 914/2.0 Roadster #4762903569, Malaga Red w/ gold Panasport wheels. One of the finest examples left, extremely clean inside & out, completely rust free Texas car, always garaged, same owner last 20 years. Numerous enhancements, quick & beautiful. \$6,900.

Bill Bartholomew (614) 761-7690 or bbartholomew@ee.net
7627 Summerwood Dr., Columbus, OH 43235.

1986 944 Turbo, Red/Black, 87K, SR, CD, includes original phone dial 16" alloys and newer 7-spoke C2 alloys with new tires. Recent: new clutch, front pads/discs, timing belt/water pump. Runs great, asking \$8900

Dick Snodgrass 317-873-4598

2000 BMW M Coupe. Imola Red, Red & Black interior, every available factory option, Dinan performance chip/airtube/airbox, custom built double adjustable Koni shocks, factory warranty. This car is very fast and handles great. 26k miles \$33,800

Scott Holley (317) 714-7586 or scott.holley@lpl.com

AUTOCAR
SPORTS & CLASSICS

Your Local Connection for Service
on Most European Car Lines



Specializing in:
•Porsche •Ferrari
•Range Rover
•Audi



AUTOCAR
SPORTS & CLASSICS

(317) 776-0164 • (317) 776-0184

*Autocar Sports & Classics provides quality service,
using quality parts, done in a timely fashion
at fair and reasonable prices.*

2008 Cherry Street • Noblesville, IN 46060



PORSCHE MART

1965 356C coupe. Guards red/Black interior. Third owner, purchased in late 1988. Baremetal restoration in 89-90. Complete engine rebuild per Pellow's books. 1750cc with Webers. Complete new interior. Rechromed body chrome, 13K miles since restoration. \$15,000. I will be away from 6/13-7/3. Please leave message or call before 6/13 or after 7/3.

Pete Lavengood 812-988-9668 or laveng@kiva.net

1972 911 PCA Stock Class Race Car. Bob Farmer race prepared 2.4 liter engine and suspension very quick and light. RS fiberglass front and rear bumpers, RS America wing, Kirkey race seat, quick release steering wheel and much more. Includes 8-7x15 Fuchs w/ Hoosiers, 4-7x15 Fuchs and other parts. \$28,500 or \$30,000 with dual axle open trailer.

Jeff Minett (812) 332-1506 or mph911@hotmail.com.

1996 996 C4S, Speed Yellow, black interior, 35,000 miles, great condition, \$55,000. Chris MacAllister (317) 543-0306 or cemac@macallister.com.

NOW OPEN

**C&R RACING
PERFORMANCE**

6950 Guion Rd., Indianapolis, IN

317-293-4100

Specializing in high-tech racing and aftermarket
performance parts.

Aurora Bearings
AEM
Brembo
Brown & Miller
C & R Racing Radiators
C & R Import Racing

CV Products
Heatshield Products
Jifty-lite
K&N
EMP / Stewart
MOMO

Peterson Fluid Systems
Port City Racing
Setrab
Skunk 2
Spal Racing
Tilton

And many, many more...

SEE ALL OUR CURRENT PRODUCTS AT...www.crracing.com

DEALER INQUIRIES WELCOME

PORSCHE MART

CARS WANTED

1996 or 1997 Porsche twin turbo in Iris Blue.

Chris MacAllister (317) 543-0306 or cemas@macallister.com.

944 Turbo, prefer S model. Looking for an original car with documented ownership and maintenance history. Would also consider a nice 944S or 944S2 at the right price.

Rick Vandersluis (616) 977-1555 or Rvds@aol.com.

PARTS FOR SALE

Hood and front bumper 1977 911; excellent condition; best offer.

Scott (812) 331-0302.

BMW new factory M Coupe wheels \$1000

Scott Holley (317) 714-7586 or scott.holley@lpl.com

Misc. 928 parts. Auto tranny, wheels, stereo/speakers, clutch, filters, lots more.

Indy (317) 254-0977 or blomgren@anatomy.lupui.edu.

Full set of 1990 S2 seven spoke factory rims with Porsche center caps. (2) 16" x 7" Fronts with 205/55/16 tires and (1) 16" x 8" Rears with 225/50/16 tires. Will fit most cars. Rims are in very good shape and tires are about 40% left of rears and 60% left on fronts. \$950 OBO. Steve Sandefur (317) 496-9696.

4-245-45 X 17" BFG R1 almost new track tires. One is new-never mounted. \$300.00. Several used and almost new 205-55, 225-50, 245-45 X 16" and 225-45, 245-45, 255-40, 275-40, X 17" track and street tires. Some 18" tires also. \$10.00 to \$75.00. Buyer pays shipping from Indianapolis.

Bob Young (317) 714-0025 or boby@quest.net.

17x8 & 17x9 993 rims with colored crest caps & new Continental tires. Taken off a 993C2S w/ 11K miles. Just balanced, no cosmetic flaws. Will fit: 911 turbo, 911/964/993, 944/968/928, Boxster. \$2,200 OBO. Brian (812) 464-8777 or bebbmi@sige.com.net.

Boxster S Carpet Mats, Black, New Never Used \$50.

Eric (317) 733-0379 OR rcanipper1@msn.com.

PARTS WANTED

Bird Automotive Armrest for 911.

Phil C (317) 823-2415.



What you want

*...professional service
for your Porsche.*

Providing the high standards of technical service you expect while still giving the personal attention you crave.

**We are your
Performance
Professionals.**

- New state-of-the-art repair facility conveniently located just west of I-69 between 82nd and 96th Streets (near the Castleton Post Office)
- Personal attention from an owner who cares about your satisfaction
- Loaner cars available by request
- 5 full-time, factory trained, ASE Certified Technicians (106 years combined experience)
- Equipped and trained to service Porsche autos.

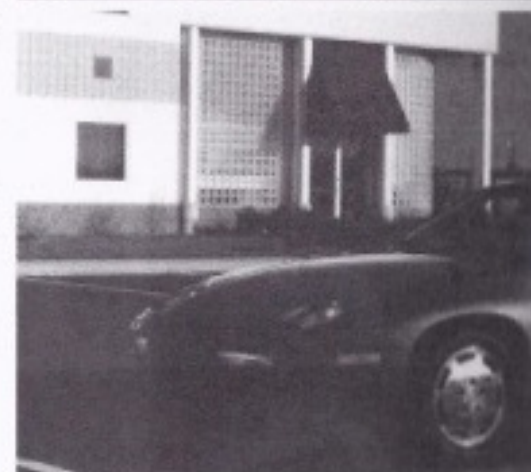
Our new location:

7314 East 90th Street

Hours:

Mon. - Fri. 7:30am to 5:30pm

317.595.9272



EURO MOTORWORKS